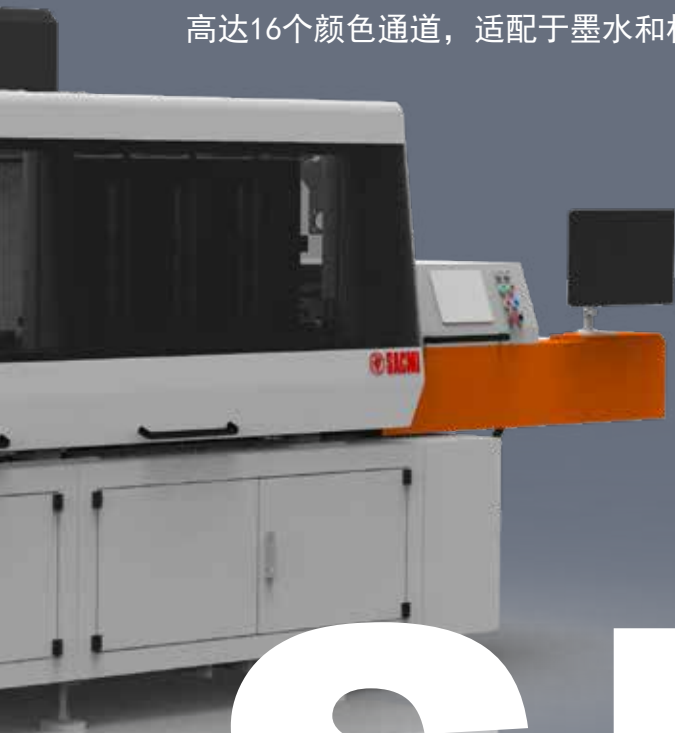


SDP - SACMI DIGITAL PRINTER

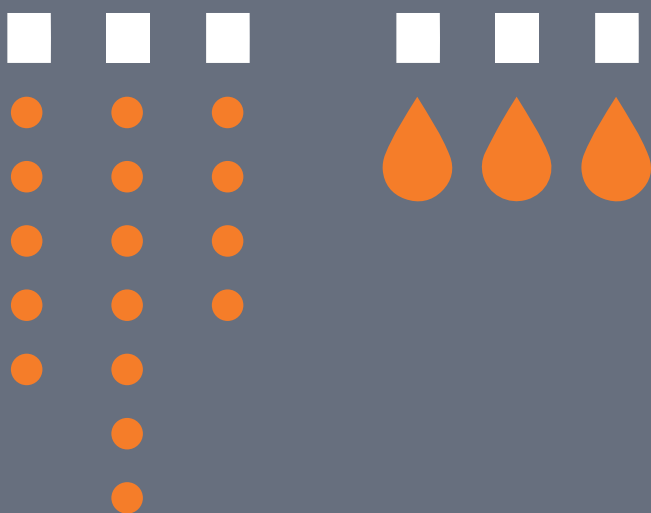
萨克米数码打印机

Up to 16 color bars for the combined application of inks and materials

高达16个颜色通道，适配于墨水和材料的组合应用



SDP



SACMI

ENDLESS INNOVATION SINCE 1919

SDP



Main Characteristics



主要特点



Flexibility

Module 8 expandable up to 16

灵活性

可由8个模块扩展到16个模块



Module 2 to allow multiple printers on the same line for digital glazing or special effects

2个模块可满足同一生产线上的多个打印机进行数码施釉或实现特殊效果

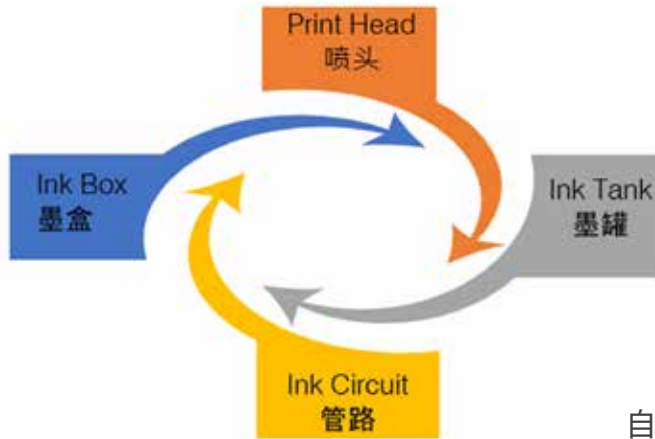


High Flow Ink Recirculation

- Specifically designed to grant the highest recirculation rate to prevent ink sedimentation

流量墨水循环

- 特殊设计, 以达到最高的再循环速度防止油墨沉淀



自动清洁系统

- 提高了系统的真空压力效能, 可以完全去除喷嘴底板上的任何油墨残留物
- 一款设计先进的喷嘴底板清洗工具

Nozzle Plate Automatic Cleaning

- Increased efficiency of the vacuum pressure for a complete removal of any ink residue on the nozzle plate
- Advanced design of the nozzle plate cleaning tool



High Precision

- Colour bar fine alignment tools
- Removable colour bars for an easy and convenient printing heads maintenance
- Print heads fine adjustment mounting
- Conveyor belt fine alignment
- Stable and sturdy structure to grant the best tile printing conditions, avoiding all kind of vibration coming from the environment

高精度

- 颜色通道微调工具
- 可拆卸的颜色通道, 简单且方便维护打印头
- 安装期间打印头可微调
- 精确校准输送带
- 稳定坚固的结构提供了最佳的瓷砖印刷条件, 规避来自周围状况产生的各种振动

SDP



EN

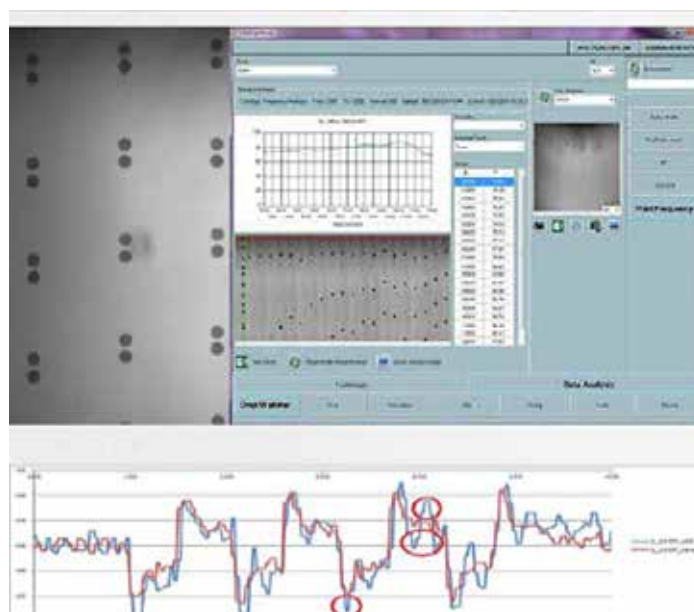
Familiar User Interface

- Designed to be easily utilized by any operator
- Scalable to more complex configuration by graphic designers and line managers
- Ready for remote service connection

ZH

熟悉常见的操作界面

- 便于任何操作人员使用的设计
- 可利用图形设计工具和生产线管理设备扩展到更复杂的配置
- 支持远程服务连接



Connectable to SACMI TRACKING SYSTEM to allow tile synchronization in case of multi-printers lines.

可连接到萨克米追踪系统,以便在多打印机生产线的情况下也支持瓷砖同步。

